

# PLANNING PROPERTY REPORT

From [www.planning.vic.gov.au](http://www.planning.vic.gov.au) at 03 May 2024 05:00 PM

## PROPERTY DETAILS

Lot and Plan Number: **Lot A PS849475**  
Address: **7805 GOULBURN VALLEY HIGHWAY KIALLA 3631**  
Standard Parcel Identifier (SPI): **A\PS849475**  
Local Government Area (Council): **GREATER SHEPPARTON**  
Council Property Number: **175413**  
Planning Scheme: **Greater Shepparton**  
Directory Reference: **Vicroads 675 N8**

[www.greatershepparton.com.au](http://www.greatershepparton.com.au)

[Planning Scheme - Greater Shepparton](#)

## UTILITIES

Rural Water Corporation: **Goulburn-Murray Water**  
Urban Water Corporation: **Goulburn Valley Water**  
Melbourne Water: **Outside drainage boundary**  
Power Distributor: **POWERCOR**

## STATE ELECTORATES

Legislative Council: **NORTHERN VICTORIA**  
Legislative Assembly: **SHEPPARTON**

## OTHER

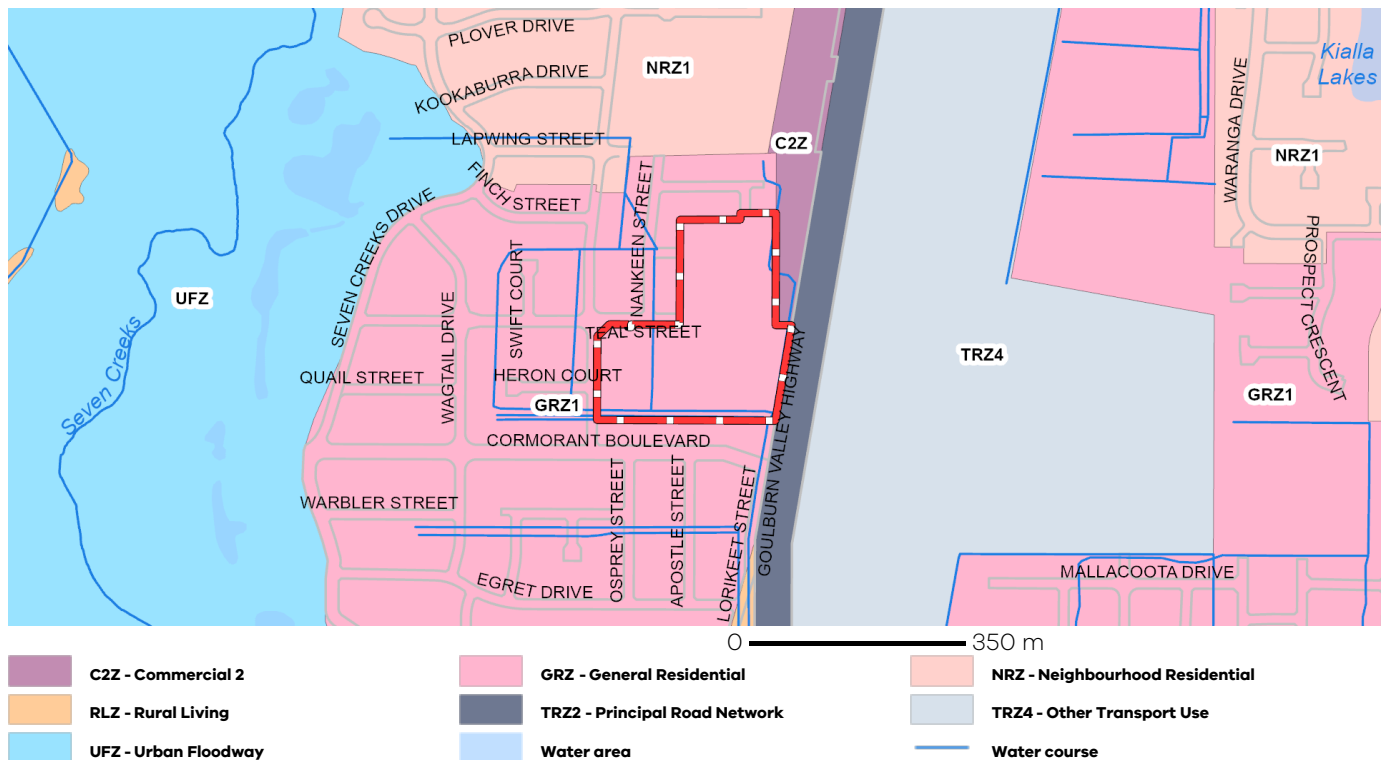
Registered Aboriginal Party: **Yorta Yorta Nation Aboriginal Corporation**

[View location in VicPlan](#)

## Planning Zones

[GENERAL RESIDENTIAL ZONE \(GRZ\)](#)

[GENERAL RESIDENTIAL ZONE - SCHEDULE 1 \(GRZ1\)](#)

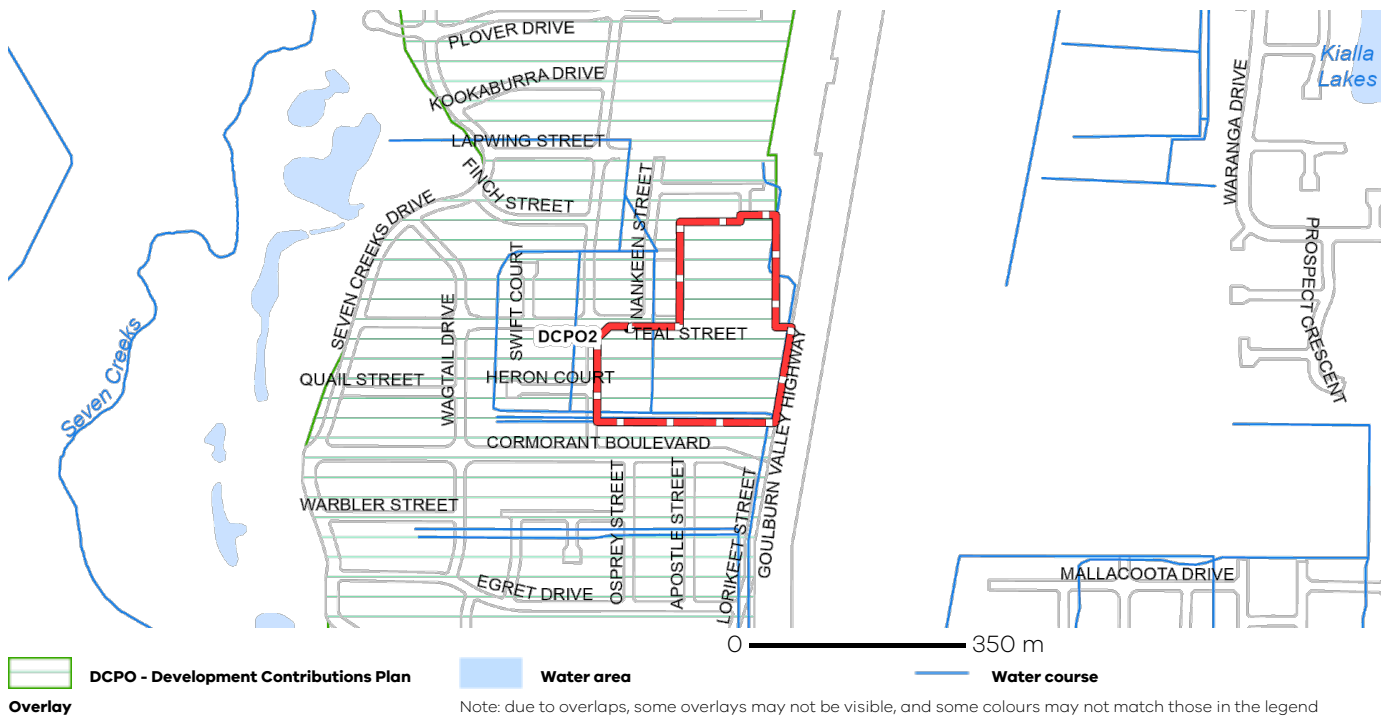


Note: labels for zones may appear outside the actual zone - please compare the labels with the legend.

## Planning Overlays

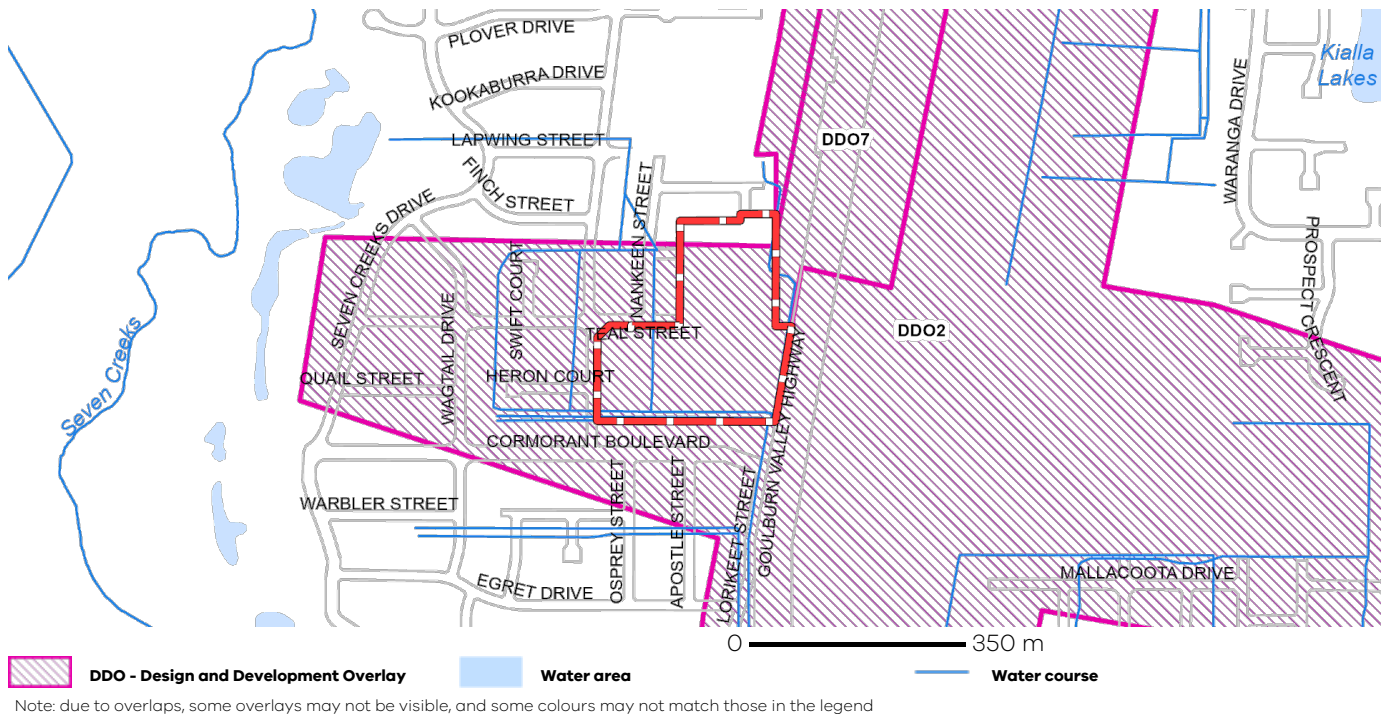
### DEVELOPMENT CONTRIBUTIONS PLAN OVERLAY (DCPO)

#### DEVELOPMENT CONTRIBUTIONS PLAN OVERLAY - SCHEDULE 2 (DCPO2)



### DESIGN AND DEVELOPMENT OVERLAY (DDO)

#### DESIGN AND DEVELOPMENT OVERLAY - SCHEDULE 2 (DDO2)

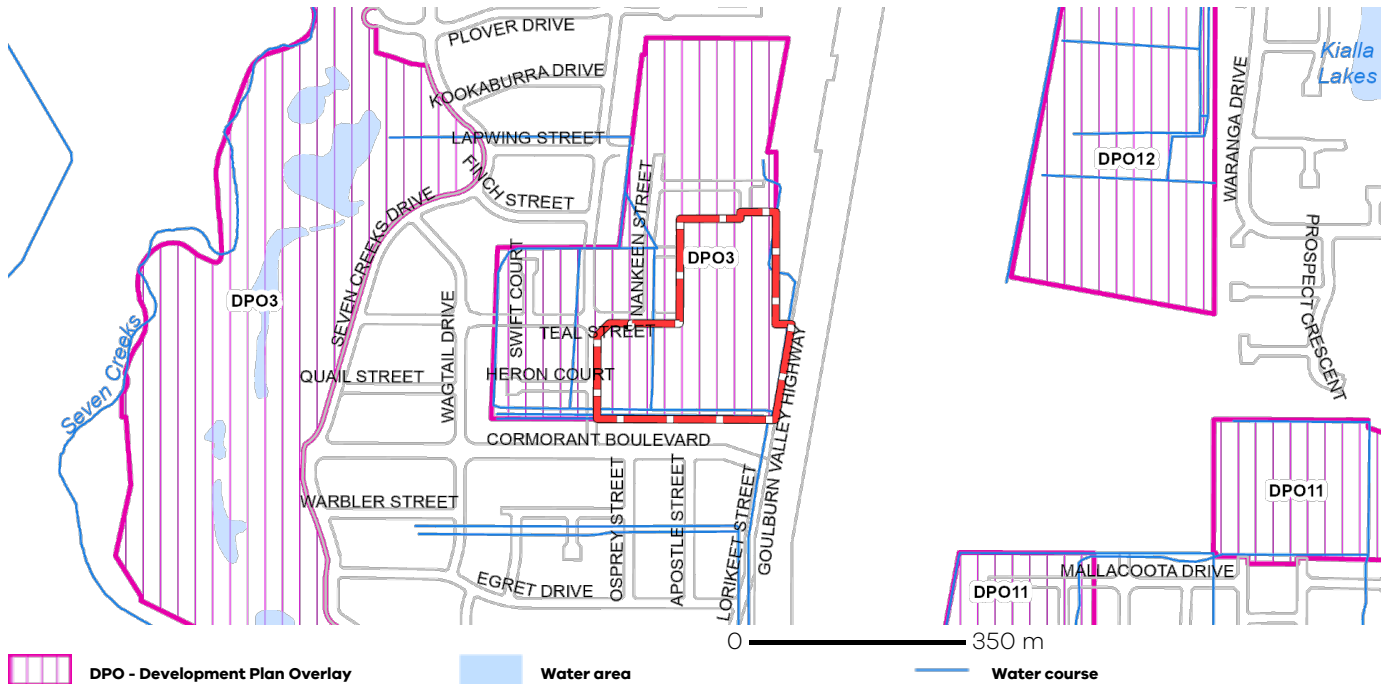


# PLANNING PROPERTY REPORT

## Planning Overlays

### DEVELOPMENT PLAN OVERLAY (DPO)

### DEVELOPMENT PLAN OVERLAY - SCHEDULE 3 (DPO3)



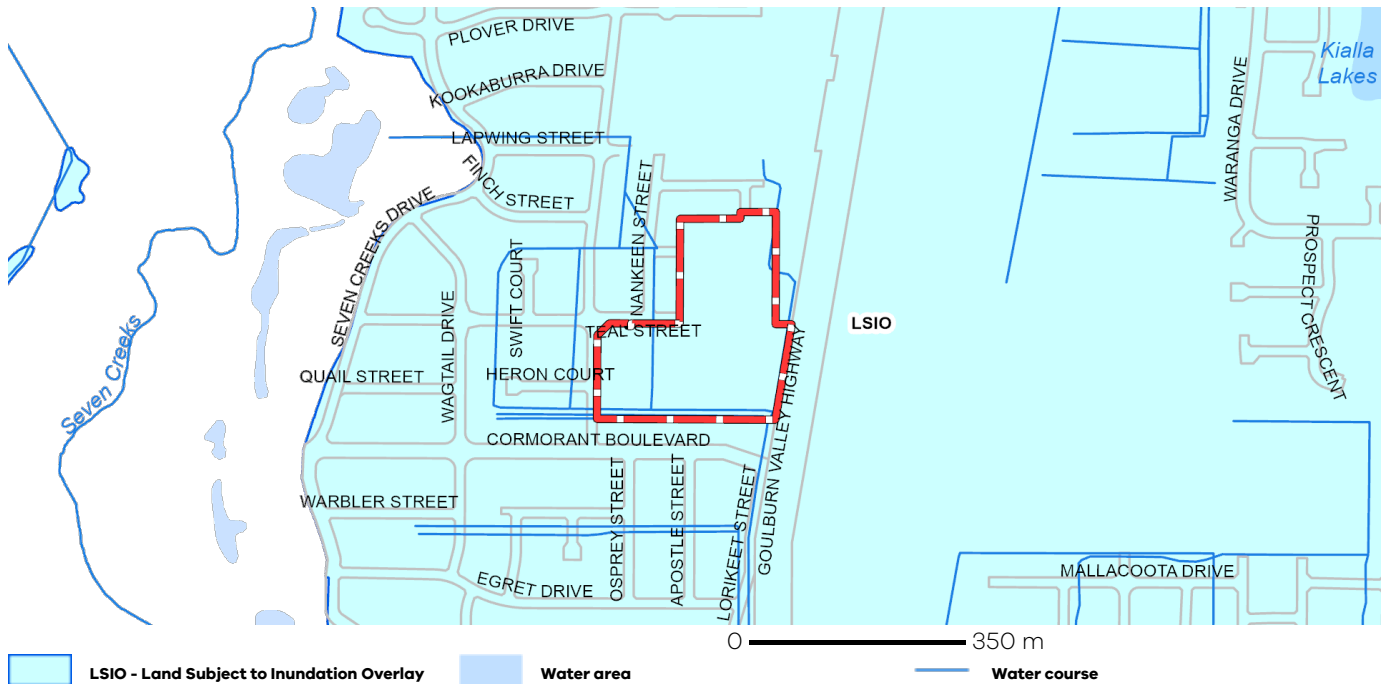
### ENVIRONMENTAL AUDIT OVERLAY (EAO)



## Planning Overlays

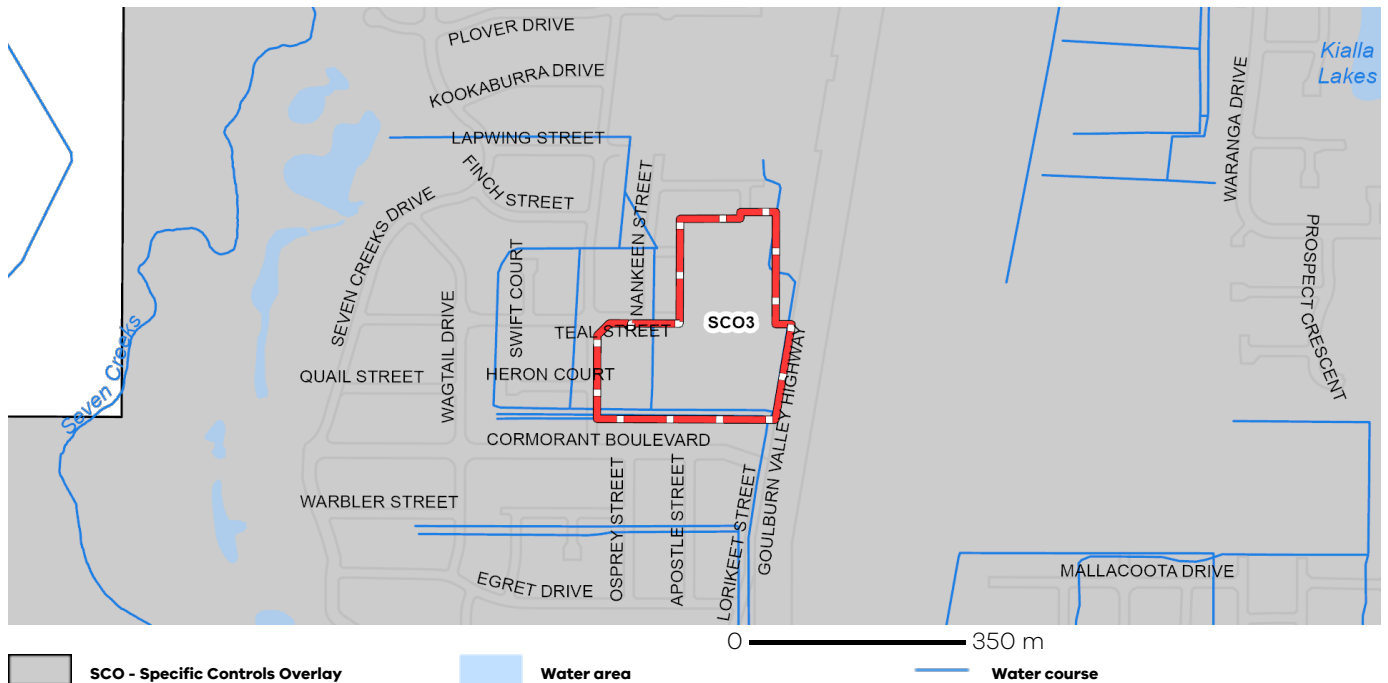
LAND SUBJECT TO INUNDATION OVERLAY (LSIO)

LAND SUBJECT TO INUNDATION OVERLAY SCHEDULE (LSIO)



SPECIFIC CONTROLS OVERLAY (SCO)

SPECIFIC CONTROLS OVERLAY - PS MAP REF SCO3 SCHEDULE (SCO3)



## Planning Overlays

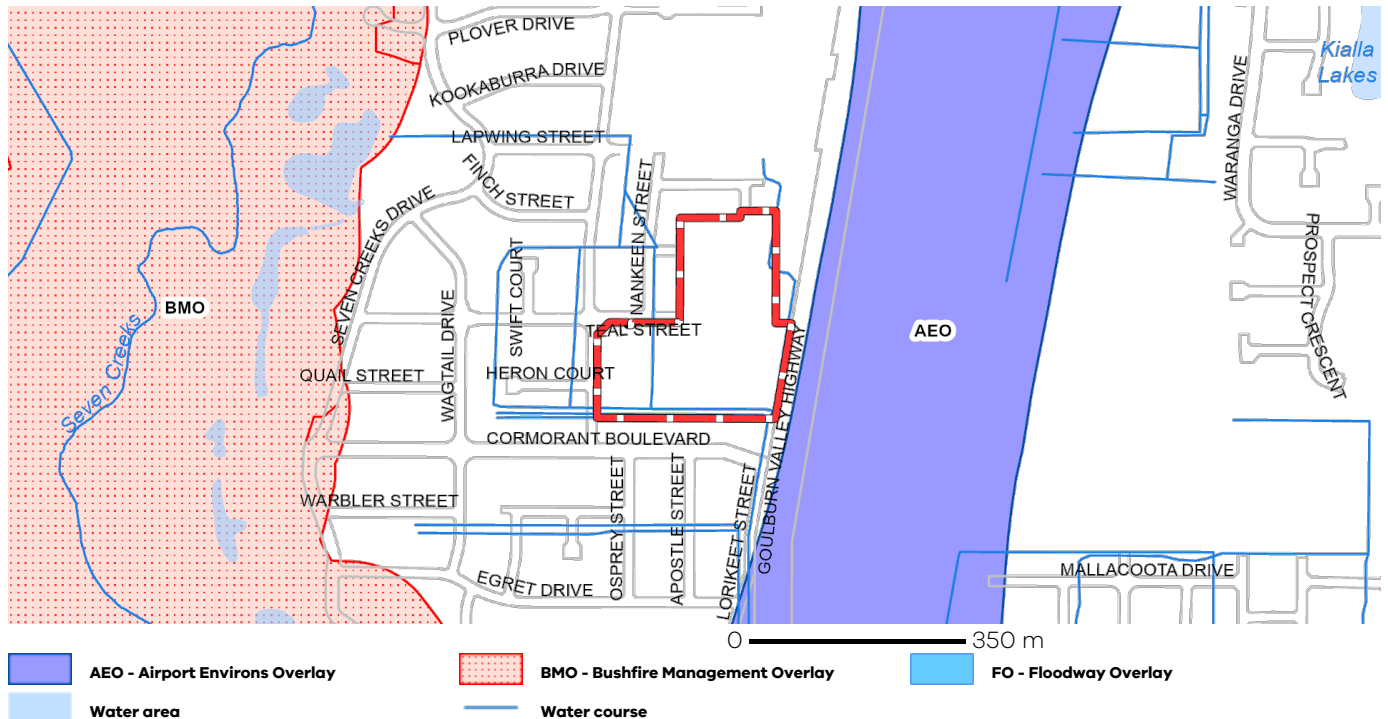
### OTHER OVERLAYS

Other overlays in the vicinity not directly affecting this land

[AIRPORT ENVIRONS OVERLAY \(AEO\)](#)

[BUSHFIRE MANAGEMENT OVERLAY \(BMO\)](#)

[FLOODWAY OVERLAY \(FO\)](#)



Note: due to overlaps, some overlays may not be visible, and some colours may not match those in the legend

## Further Planning Information

Planning scheme data last updated on 7 December 2023.

A **planning scheme** sets out policies and requirements for the use, development and protection of land.

This report provides information about the zone and overlay provisions that apply to the selected land.

Information about the State and local policy, particular, general and operational provisions of the local planning scheme that may affect the use of this land can be obtained by contacting the local council or by visiting <https://www.planning.vic.gov.au>

This report is NOT a **Planning Certificate** issued pursuant to Section 199 of the **Planning and Environment Act 1987**.

It does not include information about exhibited planning scheme amendments, or zonings that may affect the land.

To obtain a Planning Certificate go to Titles and Property Certificates at Landata - <https://www.landata.vic.gov.au>

For details of surrounding properties, use this service to get the Reports for properties of interest.

To view planning zones, overlay and heritage information in an interactive format visit

<https://mapshare.maps.vic.gov.au/vicplan>

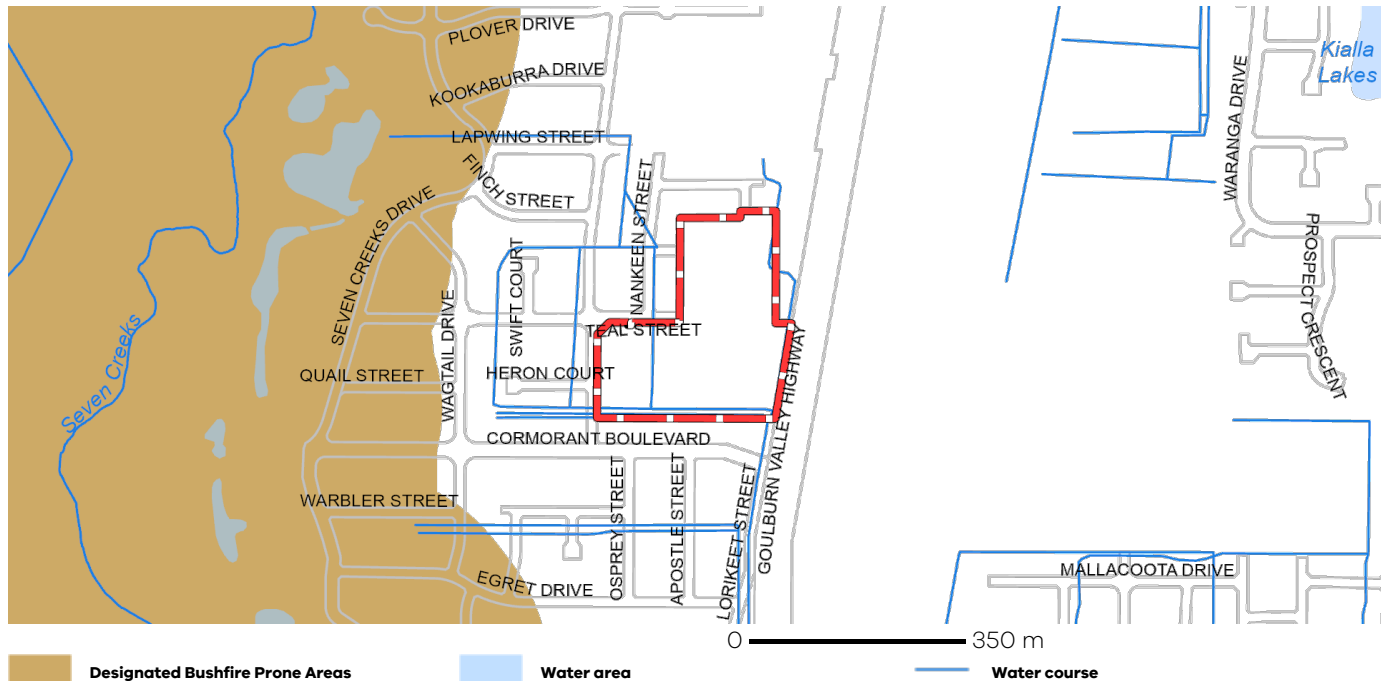
For other information about planning in Victoria visit <https://www.planning.vic.gov.au>

## Designated Bushfire Prone Areas

**This parcel is not in a designated bushfire prone area.**  
**No special bushfire construction requirements apply. Planning provisions may apply.**

Where part of the property is mapped as BPA, if no part of the building envelope or footprint falls within the BPA area, the BPA construction requirements do not apply.

Note: the relevant building surveyor determines the need for compliance with the bushfire construction requirements.



Designated BPA are determined by the Minister for Planning following a detailed review process. The Building Regulations 2018, through adoption of the Building Code of Australia, apply bushfire protection standards for building works in designated BPA.

Designated BPA maps can be viewed on VicPlan at <https://mapshare.vic.gov.au/vicplan/> or at the relevant local council.

Create a BPA definition plan in [VicPlan](#) to measure the BPA.

Information for lot owners building in the BPA is available at <https://www.planning.vic.gov.au>.

Further information about the building control system and building in bushfire prone areas can be found on the Victorian Building Authority website <https://www.vba.vic.gov.au>. Copies of the Building Act and Building Regulations are available from <http://www.legislation.vic.gov.au>. For Planning Scheme Provisions in bushfire areas visit <https://www.planning.vic.gov.au>.

## Native Vegetation

Native plants that are indigenous to the region and important for biodiversity might be present on this property. This could include trees, shrubs, herbs, grasses or aquatic plants. There are a range of regulations that may apply including need to obtain a planning permit under Clause 52.17 of the local planning scheme. For more information see [Native Vegetation \(Clause 52.17\)](#) with local variations in [Native Vegetation \(Clause 52.17\) Schedule](#)

To help identify native vegetation on this property and the application of Clause 52.17 please visit the Native Vegetation Information Management system <https://nvim.delwp.vic.gov.au/> and [Native vegetation \(environment.vic.gov.au\)](#) or please contact your relevant council.

You can find out more about the natural values on your property through NatureKit [NatureKit \(environment.vic.gov.au\)](#)